

KWP A2 | AISI305



A2
AISI 305

CYLINDRICAL HEAD SCREW FOR WPC BOARDS

WPC BOARDS

Special geometry specifically designed for fastening WPC (Wood Plastic Composite) boards to a wood or WPC substructure, even without pre-drilling.

TRIPLE THREAD

The combination of the two under-head threads causes removal of the WPC fibres. Exceptional penetration into the WPC, even without pre-drilling.

VOLCANO EFFECT

Removal of plastic fibres from the WPC guarantees an excellent board finish. Small conical head ensures that it will be concealed in the WPC.



CHARACTERISTICS

FOCUS	removal of shavings from WPC boards
HEAD	cylindrical, countersunk
DIAMETER	5,0 mm
LENGTH	from 60 to 70 mm



MATERIAL

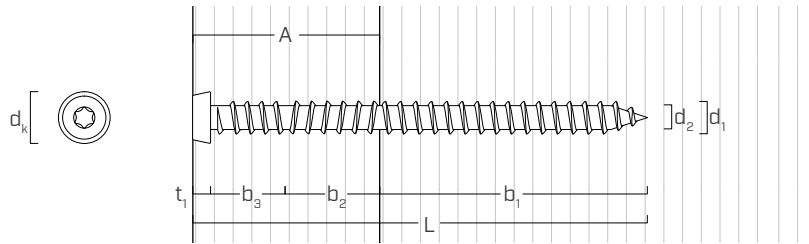
A2 | AISI305 austenitic stainless steel.

FIELDS OF USE

Outdoor use in highly aggressive environments.

WPC boards (without pre-drill). Wooden boards with density of $< 780 \text{ kg/m}^3$ (without pre-drill) and $< 880 \text{ kg/m}^3$ (with pre-drill). Suitable for service classes 1-2-3.

GEOMETRY



Nominal diameter	d₁	[mm]	5
Head diameter	d _k	[mm]	6,75
Tip diameter	d ₂	[mm]	3,30
Head thickness	t ₁	[mm]	2,30
Pre-drilling hole diameter	d _v	[mm]	3,00

CODES AND DIMENSIONS

d ₁ [mm]	CODE	L [mm]	b ₁ [mm]	b ₂ [mm]	b ₃ [mm]	A [mm]	pcs
5	KWP560	60	36	15	6,5	25	200
TX 20	KWP570	70	46	15	6,5	25	100



WOOD PLASTIC COMPOSITE (WPC)

Ideal for fastening WPC boards, both solid and perforated, even without pre-drilling.