

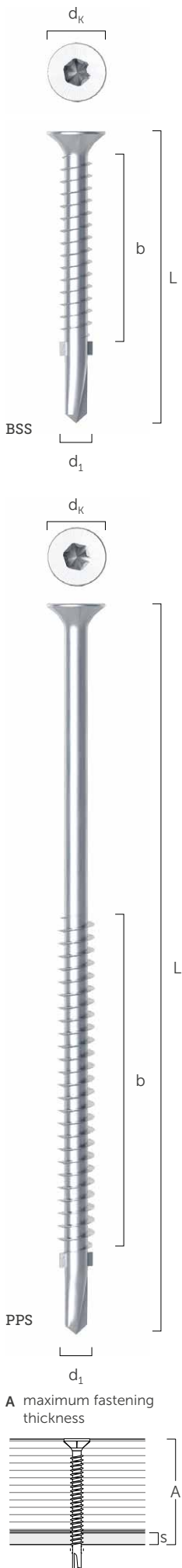
BSS | PPS

SELF-DRILLING TIMBER-METAL SCREW

- For direct fastening of timber elements to steel substructures without pre-holes
- The fins protect the screw thread during penetration into the wood. They guarantee maximum threading efficiency in metal and perfect adhesion between the thickness of the timber and the metal
- The PPS version with partial thread is ideal for fastening SIP and sandwich panels to metal, even in thick layers, thanks to the complete range of lengths up to 240 mm
- Very sharp under-head ribs for a perfect surface finish on the wooden element
- Special self-perforating tip with bleeder geometry for excellent drilling capacity both in aluminium (thickness: up to 10 mm) and steel (thickness: up to 8 mm)



MATERIAL: carbon steel with bright zinc plated



BSS

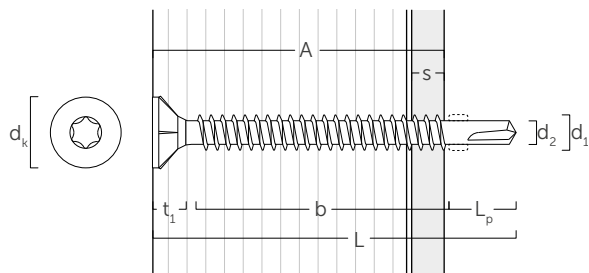
d_1 [mm]	d_k [mm]	CODE	L [mm]	b [mm]	A [mm]	s_1 [mm]	s_2 [mm]	pcs
4,2 TX 20	8,00	BSS4232	32	19	17	1 ÷ 3	2 ÷ 4	500
		BSS4238	38	25	23	1 ÷ 3	2 ÷ 4	500
4,8 TX 25	9,25	BSS4838	38	23	21	2 ÷ 4	3 ÷ 5	200
		BSS4845	45	30	28	2 ÷ 4	3 ÷ 5	200
5,5 TX 30	10,50	BSS5545	45	29	26	3 ÷ 5	4 ÷ 6	200
		BSS5550	50	34	31	3 ÷ 5	4 ÷ 6	200
6,3 TX 30	12,00	BSS6360	60	40	36	4 ÷ 6	6 ÷ 8	100
		BSS6370	70	50	46	4 ÷ 6	6 ÷ 8	100
		BSS6385	85	65	61	4 ÷ 6	6 ÷ 8	100
		BSS63100	100	80	76	4 ÷ 6	6 ÷ 8	100

PPS

d_1 [mm]	d_k [mm]	CODE	L [mm]	b [mm]	A [mm]	s_1 [mm]	s_2 [mm]	pcs
6,3 TX 30	12,50	PPS63125	125	60	96	6 ÷ 8	8 ÷ 10	100
		PPS63145	145	60	116	6 ÷ 8	8 ÷ 10	100
		PPS63165	165	60	136	6 ÷ 8	8 ÷ 10	100
		SPP63180	180	60	151	6 ÷ 8	8 ÷ 10	100
		SPP63200	200	60	171	6 ÷ 8	8 ÷ 10	100
		SPP63220	220	60	191	6 ÷ 8	8 ÷ 10	100
		SPP63240	240	60	211	6 ÷ 8	8 ÷ 10	100

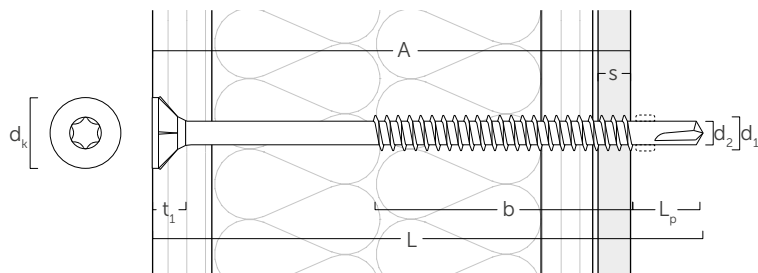
s_1 thickness, steel plate S235/St37
 s_2 thickness, aluminium plate

GEOMETRY | BSS



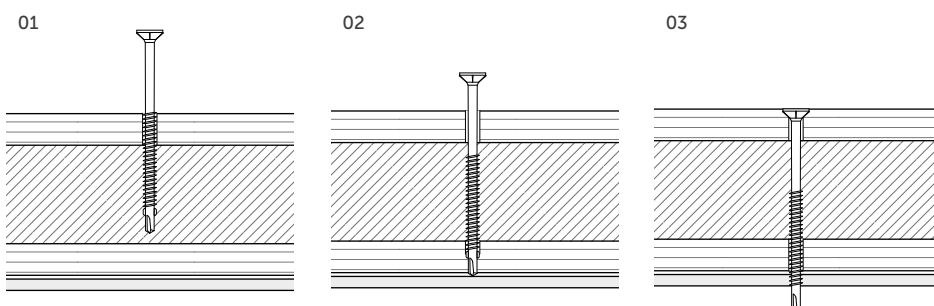
nominal diameter	d₁	[mm]	4,2	4,8	5,5	6,3
head diameter	d _k	[mm]	8,0	9,3	10,5	12,0
thread diameter	d ₂	[mm]	3,30	3,50	4,15	4,85
head thickness	t ₁	[mm]	3,5	4,2	4,8	5,30
tip length	L _p	[mm]	10,0	10,5	11,5	15,0

GEOMETRY | PPS



nominal diameter	d₁	[mm]	6,3
head diameter	d _k	[mm]	12,5
thread diameter	d ₂	[mm]	4,85
head thickness	t ₁	[mm]	5,30
tip length	L _p	[mm]	20,0

INSTALLATION



Recommended screwing:
 ≈ 1000 - 1500 rpm (steel plate)
 ≈ 600 - 1000 rpm (aluminium plate)