

KKK AISI410



410
AISI

SELF-DRILLING SCREW TIMBER-TO-TIMBER | TIMBER-TO-ALUMINIUM

TIMBER-TO-ALUMINIUM

Self-perforating timber-to-metal tip with special bleeder geometry. Ideal for fastening timber or WPC boards to aluminium substructures.

TIMBER-TO-TIMBER

Also ideal for fastening timber or WPC boards to thin wooden substructures, they, too, made with wooden boards. AISI410 stainless steel.

METAL-TO-ALUMINIUM

Short version ideal for fastening clips, plates and angle brackets to aluminium substructures. Can be used to fix aluminium-aluminium overlaps.



CHARACTERISTICS

FOCUS	self-drilling, timber-aluminium
HEAD	cylindrical, countersunk
DIAMETER	4,0 5,0 mm
LENGTH	from 20 to 50 mm



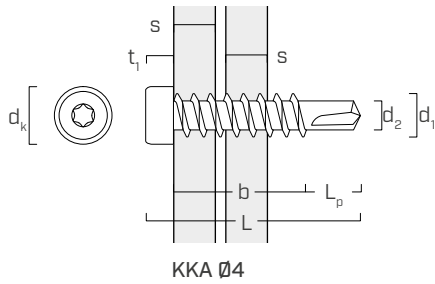
MATERIAL

AISI410 martensitic stainless steel.

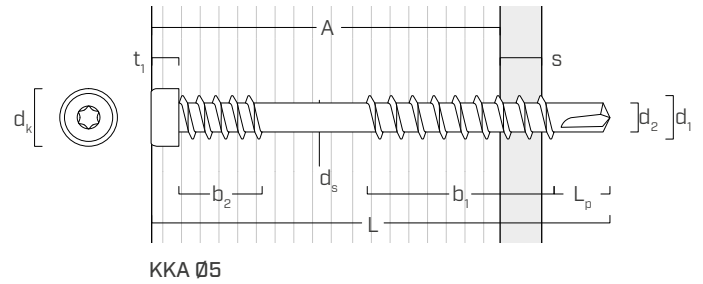
FIELDS OF USE

Outdoor use. Wooden boards with density of $< 880 \text{ kg/m}^3$ on aluminium with a thickness of $< 3.2 \text{ mm}$ (without pre-drill). Suitable for service classes 1-2-3.

GEOMETRY




KKA Ø4




KKA Ø5

Nominal diameter	d_1	[mm]	4	5
Head diameter	d_k	[mm]	6,30	6,80
Tip diameter	d_2	[mm]	2,80	3,50
Shank diameter	d_s	[mm]	-	4,35
Head thickness	t_1	[mm]	3,10	3,35
Tip length	L_p	[mm]	5,50	6,50

CODES AND DIMENSIONS

	d_1	CODE	L	b_1	b_2	A	s	pcs
	[mm]		[mm]	[mm]	[mm]	[mm]	[mm]	
	4	KKA420	20	11,4	-	-	1÷2.5	200
	TX 20							

	d_1	CODE	L	b_1	b_2	A	s	pcs
	[mm]		[mm]	[mm]	[mm]	[mm]	[mm]	
	5	KKA540	40	15,5	11	29	2÷3	100
	TX 25	KKA550	50	20,5	11	39	2÷3	100

s thickness, steel plate S235/St37
s thickness, aluminium plate



ALU TERRACE

Ideal for fastening timber or WPC boards, clips or angle brackets to aluminium substructures.

KKA COLOR



SELF-DRILLING SCREW FOR ALUMINIUM

ALUMINIUM

Self-perforating tip with special bleeder geometry. Ideal for fastening clips to aluminium substructures.

COLOURED COATING

Black anti-rust coating for outdoor use in service class 3. Concealed effect on dark substructures and clips.

METAL-TO-ALUMINIUM

Short version ideal for fastening clips, plates and angle brackets to steel or aluminium substructures. Can be used to fix metal-metal overlaps.



CHARACTERISTICS

FOCUS	self-drilling aluminium
HEAD	cylindrical, countersunk
DIAMETER	4,0 and 5,0 mm
LENGTH	from 20 to 40 mm



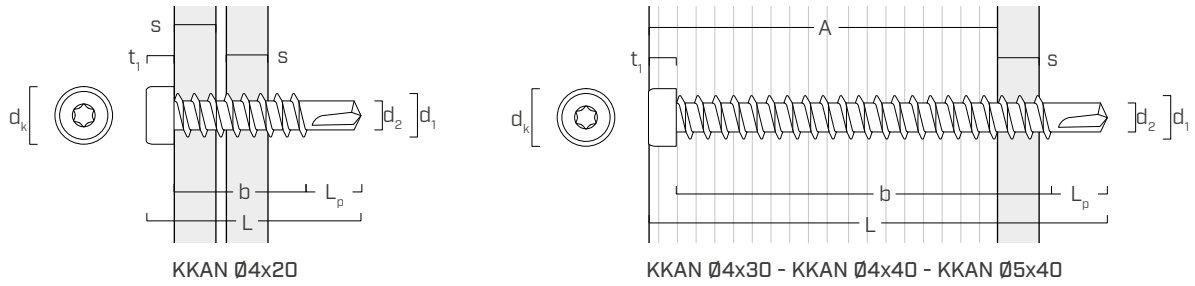
MATERIAL

Carbon steel with coloured organic anti-rust coating.

FIELDS OF USE

Outdoor use. Aluminium thickness < 3,2 mm (without pre-drill). Suitable for service classes 1-2-3.

GEOMETRY



Nominal diameter	d_1	[mm]	4	5
Head diameter	d_k	[mm]	6,30	6,80
Tip diameter	d_2	[mm]	2,80	3,50
Head thickness	t_1	[mm]	3,10	3,35
Tip length	L_p	[mm]	5,50	6,50

CODES AND DIMENSIONS



d_1	CODE	L	b	A	s	pcs
[mm]		[mm]	[mm]	[mm]	[mm]	
4 TX 20	KKAN420	20	10	-	2÷3	200
	KKAN430	30	20	22	2÷3	200
	KKAN440	40	30	32	2÷3	200
5 TX 25	KKAN540	40	29	29	2÷3	200

s thickness, steel plate S235/St37
s thickness, aluminium plate



TVM COLOR

Ideal for fastening standard Rothoblaas clips (TVMN) on aluminium. Long bit included in each package.