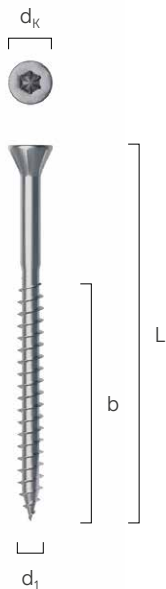


TPP AISI410

SMALL HEAD SCREW



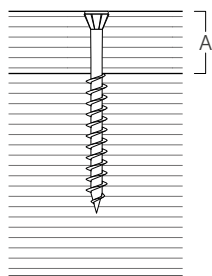
- The reduced head with a 60° angle ensures a concealed effect and easy insertion even in small thickness, without creating openings in the timber
- Perfect for fastening timber glazing beads for windows
- AISI 410 stainless steel version for outdoor applications



MATERIAL: stainless steel AISI 410

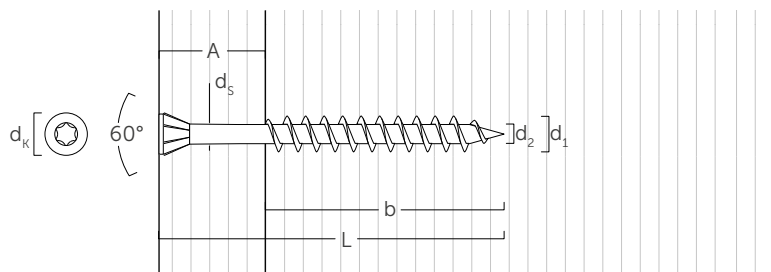


A maximum fastening thickness



d ₁ [mm]	d _k [mm]	CODE	L [mm]	b [mm]	A [mm]	pcs
3,5 TX 10	5,75	TPP3540AS	40	26	14	500
		TPP3550AS	50	34	16	500

GEOMETRY



nominal diameter	d₁	[mm]	3,5
head diameter	d _k	[mm]	5,75
thread diameter	d ₂	[mm]	2,15
shank diameter	d _s	[mm]	2,50
head thickness	t ₁	[mm]	4,00
pre-drilling hole diameter ⁽¹⁾	d _v	[mm]	2,0

⁽¹⁾ Pre-drilling valid for softwood.